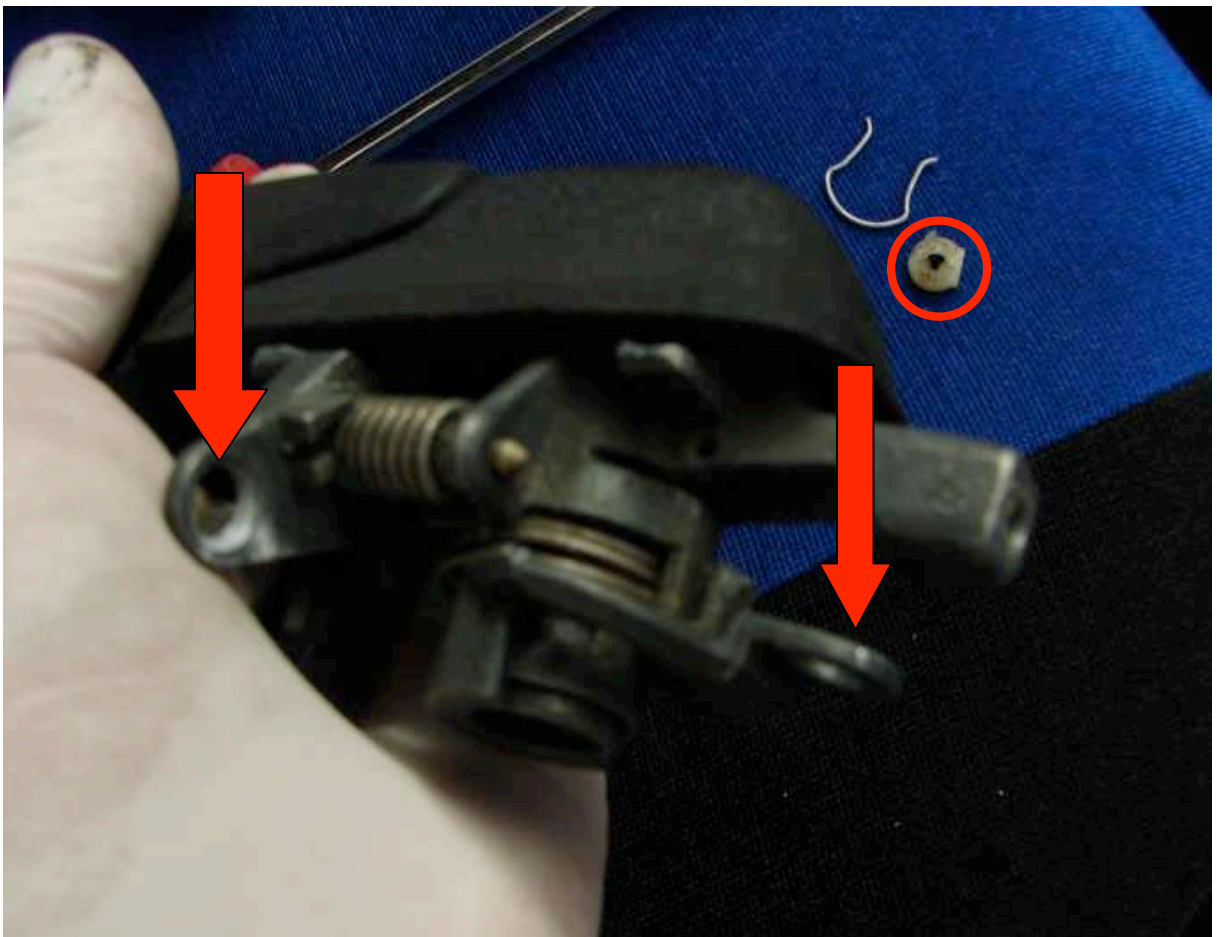


Bravo/a door handle replacement

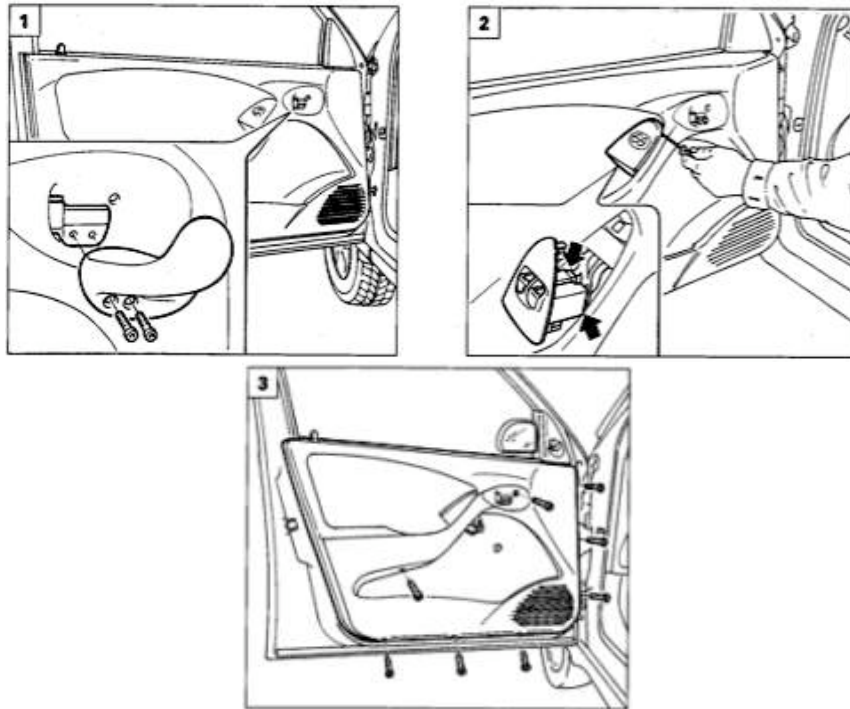
WARNING !!!!!!!!

THIS GUIDE IS BASED ON PUTTING ON NEW HANDLES, IF YOU ARE USING OLD MAREA ONES, YOU NEED TO BE VERY GENTLE NOT TO BREAK THE PLASTIC RETAINING CLIPS ON THE HANDLES !!!!!!!!

How the clip looks is circled with a red circle and where the clips are positioned, is pointed out with red arrows.

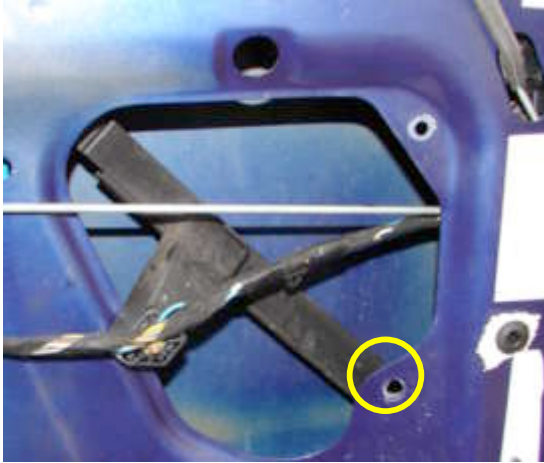


First you need to take off the door card, here is a short reminder of where the screws are.



After you have removed the door card and the protective sheet, you have to take out this window lead so you get better access to the pins.

To get it away, total unscrew the yellow circled nut and loosen the torx bolt (circled red).



Now that you have done the above, move the lead out of the way.

Also remove the plastic bit that is held by the nut on the yellow circled spot.

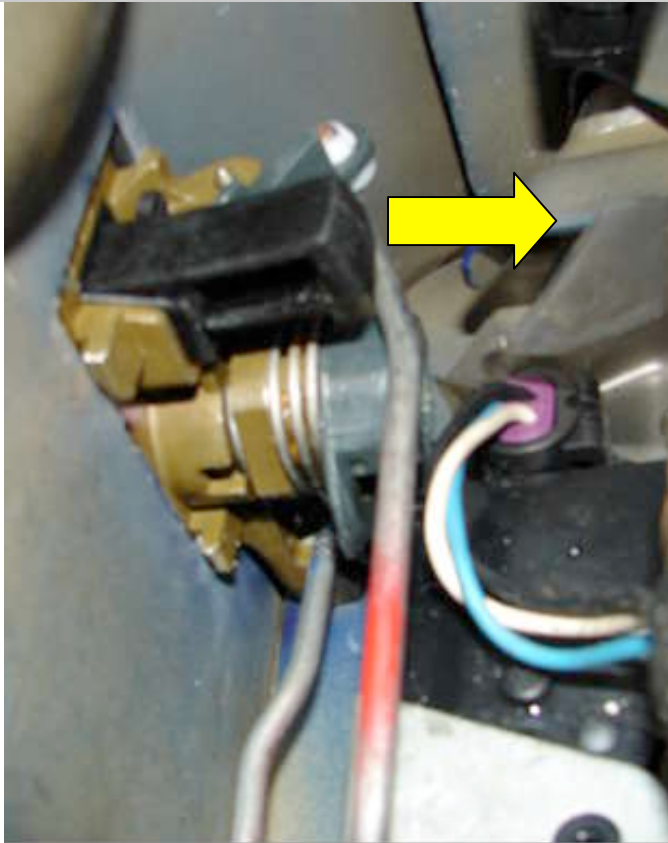


The next step is to unscrew the handle. To do so, unscrew the screw circled red and the nut in the opening (arrow).



Now comes the hard part, removing the handle lever.

You need to remove one lever from inside the door and one from the outside.



The inside lever.

To take it off, you need to push it in the arrow direction. The lever is the one closer on the pic. The direction is to the lock on the door, or as in the pic to the connector.



After you removed it, it will look like this.

Now that all that is done, we are about to take the handle off.

Go to the front of the door and move the handle in the direction of the yellow arrow until it is free to be taken out by its down part.

To take the down part out, just twist the handle in the red arrow direction.



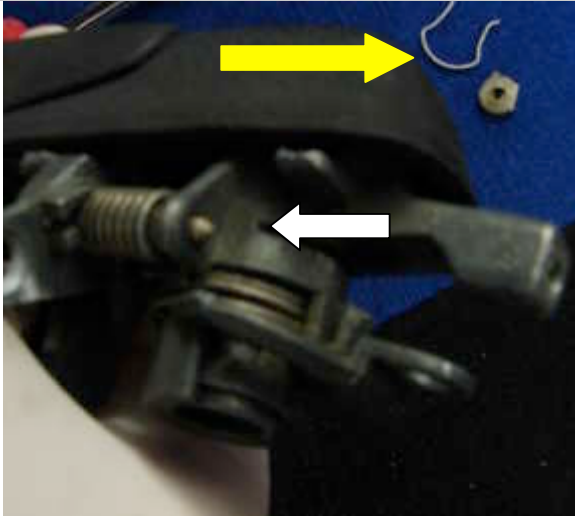
Now that you got the handle out, it will look like this.

The next step is to disconnect the second lever, so you just pop it out of the handle - arrow



After the second lever is off, you can remove the handle.

Fitting the new handles



First you need to get your key cylinder out and put it in the new handle.

WARNING !!!!!!!

YOU MUST PUT THE KEY IN THE CYLINDER, AND KEEP IT IN DURING THIS PROCESS !!!!!

To do so, you need to take out a spring (yellow arrow, that is positioned on the handle (white arrows).

To take it off, just push the spring end down using a screw driver (white arrow)

When its half way out, turn the handle over and pull it out (red arrow).

Now the cylinder is free to pull out.

After you pulled out the cylinder, put it in the new handle and put the spring back in.

After the spring is back on, you may pull the key out.



Take the new handle and put it in half way in.

Connect the lever shown on the pic left.

Then putt the handle on its place and secure it with the screw and the nut.

After that, put the other lever in the plastic holder on the handle and try if all works.

If all is OK, return the door card and your done ☺
Go to next side.